

# Original SmartPegs by Osstell

Now also available  
as reusable version



**Single-use** SmartPeg  
**Reusable** SmartPeg



## Trust in the measured value

The only true value

SmartPegs are part of the original Osstell ISQ concept, using the proven RFA method for measuring implant stability. Discover the difference reliable ISQ values make – and why SmartPegs are the trusted choice for clinicians worldwide.

## Why SmartPegs by Osstell?

**The original ISQ scale.  
The most documented.**

Osstell is the originator of the ISQ scale, the world's most clinically validated solution for measuring implant stability.



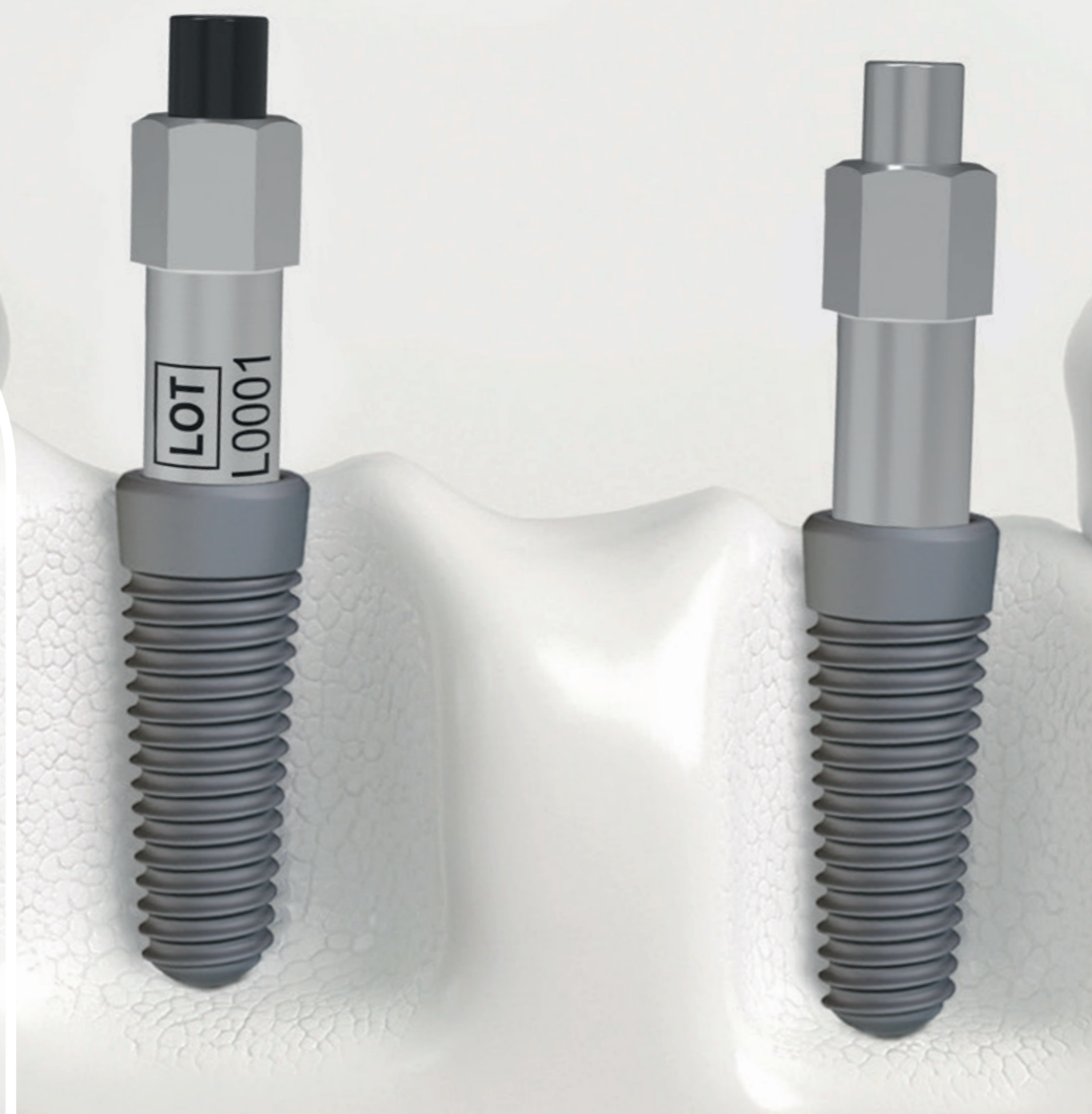
### Find the available reusable SmartPegs

SmartPegs are initially available as reusable version for selected implant systems. Availability is subject to local market approval. Scan the QR code or visit [osstell.com/news/find-the-available-reusable-smartpegs/](https://osstell.com/news/find-the-available-reusable-smartpegs/) to see the current list of available reusable SmartPegs.



### Not sure which SmartPeg fits your implant?

Use our online tool [Find my SmartPeg](#) to identify the correct SmartPeg type and version for your implant system.



## Main features and **benefits** at a glance



Made of **aluminium**



For **protecting** the precise and sensitive implant connection



Based on the original **ISQ technology**



For **confidence** and **flexibility**



Scientifically **validated**



For high **reliability** of measurement results



**Confidence** in every measurement



For high **diagnostic** certainty



**Feature**



**Benefit**



## Two versions

One proven solution

Sterile single-use or reusable SmartPeg. The choice is yours. Full flexibility with identical ISQ accuracy and no conversion tables needed.



## Single-use SmartPeg

Supplied sterile, ready to use

For clinicians who prefer a disposable solution, the single-use SmartPeg remains the most straightforward choice, as it is delivered sterile and ready to use. Its extensive global coverage of implant systems offers maximum flexibility with hundreds of implant systems.

### Key features:

- › Delivered sterile and ready to use
- › Eliminates any risk of reprocessing errors
- › Extensive global Osstell coverage with implant systems

## Reusable SmartPeg

Up to 20 validated reprocessing cycles

Same proven ISQ accuracy. The new reusable SmartPeg is made from the same aluminium material as the sterile single-use version, ensuring full continuity with extensive clinical documentation supporting the original ISQ method.



### Key features:

- › Up to 20 validated reprocessing cycles
- › Identical ISQ accuracy to the sterile single-use SmartPeg
- › Laser marked type and LOT number for clear identification
- › Black magnet for easy measuring orientation and clear distinction from the sterile single-use version
- › Protective surface coating for durable performance

## Your premium choice for implant stability Osstell Beacon

The Osstell Beacon offers precise and efficient implant stability assessment, making it an ideal choice for modern dental practices. With its intuitive traffic-light guidance and real-time dental implant stability measurements, it provides valuable insights to support informed clinical decisions and guide treatment planning.

For even greater convenience, the Osstell Beacon includes **OsstellConnect**, a free cloud-based platform offering valuable data insights, enhanced patient communication, and simplified documentation.



## Looking for a basic option? Meet Osstell Classic

For reliable implant stability measurements without extra features, the Osstell Classic provides a practical and straightforward solution. It utilises Osstell's evidence-based RFA technology to provide objective and repeatable stability assessments that supports clinical decision-making.




## Your compass for tomorrow's dental surgery

The W&H Oral Surgery Compass serves as a practical guide through the individual treatment steps in oral surgery and implantology – from diagnosis and treatment to final documentation.



Digital technologies are revolutionising dental treatment. With the optimal integration of devices, software and digital processes, W&H supports users in making every step of treatment efficient, safe and patient-oriented. W&H products work hand in hand, are connected and complement each other.

# Comparison **single-use** **vs. reusable** SmartPegs

Specification	Single-use SmartPeg	Reusable SmartPeg
<b>Handling:</b>	Sterile, ready to use	Non-sterile, validated cleaning & sterilization required
<b>Waste:</b>	More waste per use	Less waste over time
<b>Workflow:</b>	One peg per treatment session	Multiple treatment sessions, up to 20 times
<b>ISQ accuracy:</b>	Consistent	Consistent
<b>Product range:</b>	Full range	Covering all major implant brands
<b>Package:</b>	5-pack, blister	1-pack, plastic sleeve
<b>Expiry date:</b>	5 years	No expiry date
	<p><b>Not sure which SmartPeg fits your implant?</b> Use our online tool <b>Find my SmartPeg</b> to identify the correct SmartPeg type and version for your implant system.</p>	



## Manufacturer:

**Osstell AB**  
Stampgatan 14  
411 01 Göteborg, **Sweden**  
t +46 31 340 82 50  
info@osstell.com  
**osstell.com**