

## Measurement procedure

### Taking a measurement with Osstell IDx

Without touching it, aim the probe towards the magnet on the top of the SmartPeg (Figure 1). The distance between the top of the probe and the SmartPeg should be a couple of millimeters. When the right range has been reached the instrument will start beeping. A slightly longer beep indicates a valid measurement and the ISQ value will appear on the display screen (Figure 2).

Figure 1

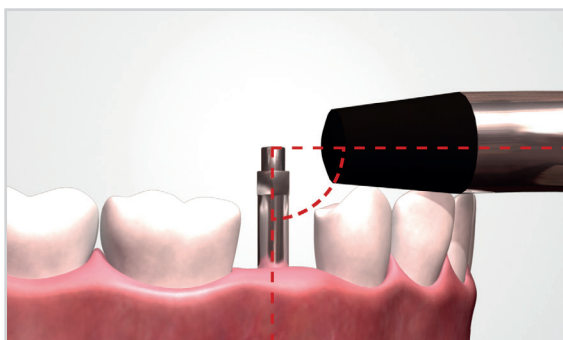
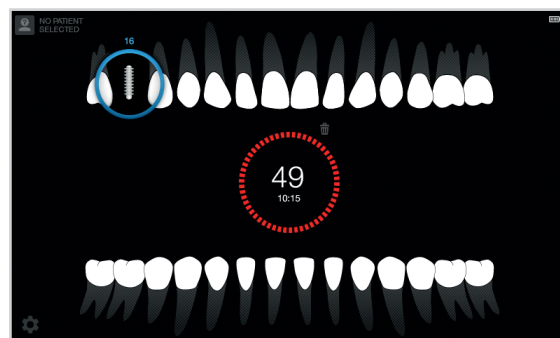


Figure 2



Normally, the same ISQ value is found from all directions, since the bone-implant interface is the same around the implant. However, if the bone is inhomogeneous the implant can have different stability in different directions. Osstell will, in this case, provide the highest and the lowest ISQ values. To ensure both ISQ values are received, it is recommended to measure from at least two different angles (Figure 3). Sometimes both ISQ values will be displayed simultaneously (Figure 4).

Figure 3



Figure 4

